



 elica  
aria nuova

COMFORT

# ALLASIO

## Dimensions

30"W x 20"D x 4 3/4"H  
36"W x 20"D x 4 3/4"H

## Models

EAL330BL	Allasio 30" Black	EAL330SS	Allasio 30" Stainless
EAL330WT	Allasio 30" White	EAL336SS	Allasio 36" Stainless

# UNDER-CABINET

## SPACE SAVER MINIMALIST



The slim Allasio with 4 3/4" height is ideal where under-cabinet space is limited, plus the contemporary styling and gleaming colors will compliment other appliances and most cabinetry. Allasio features a 3-speed, 300 CFM internal blower, which provides sufficient ventilating power for most kitchens. The attractive, electronic push button controls illuminate an elegant blue glow when activated and allows the user to manage blower speeds and dual halogen lamps.

Dishwasher-safe anodized aluminum mesh filters are easy to clean and a snap to remove and replace. Available in 30" or 36" widths, Allasio is designed for standard ducted installation, and can be installed as a recirculating system, using the Recirculating Kit. Additional accessories for Allasio (upgrade filter and backdraft damper) can be found on page 6.



halogen lamps



electronic push button controls



anodized aluminum mesh filters

# NEMI

## Dimensions

30"W x 18 3/4"D x 5"H  
36"W x 18 3/4"D x 5"H

## Models

ENM230WT	Nemi 30" White	ENM230SS	Nemi 30" Stainless
ENM230BL	Nemi 30" Black	ENM236SS	Nemi 36" Stainless



Nemi sports a slender 5" height and soft curves, designed to modernize and perfectly fit kitchens where space is premium. Nemi features a 3-speed, 280 CFM internal blower, which provides sufficient ventilating power for most kitchens. The durable stainless steel push button controls allow for easy adjustment of blower speeds and dual halogen lamps. A single dishwasher-safe anodized aluminum mesh filter is easy to clean.

Available in 30" or 36" widths, Nemi is designed for standard ducted installation, and can be installed as a recirculating system, using the Recirculating Kit, available as an accessory. For design versatility, Nemi is available in a choice of stainless steel, black, or white finishes. Additional accessories for Nemi (duct transition and backdraft damper) can be found on page 6.



halogen lamps



stainless steel push button controls



anodized aluminum mesh filter

# SORA

## Dimensions

30"W x 23"D x 10"H  
36"W x 23"D x 10"H

## Models

ESR430SS	Sora 30" Stainless
ESR436SS	Sora 36" Stainless



Available in 30" and 36" widths and only 10" high, the Sora offers professional styling and adequate power for most cooking needs. Sora features an efficient, 400 CFM blower with dishwasher safe anodized aluminum mesh filters, halogen lighting and rocker switch controls for convenience and safety. Sora is sure to deliver easy maintenance, higher efficiency and a cleaner kitchen.



halogen lamps



rocker controls



anodized aluminum mesh filters

# TOBLINO

## Dimensions

30"W x 19 5/8"D x 1 9/16"H  
36"W x 19 5/8"D x 1 9/16"H

## Models

ETB430S1 Toblino 30" Stainless  
ETB436S1 Toblino 36" Stainless



Toblino with its super sleek hood design that's only 2" high is the perfect complement to modern kitchen designs that often feature futuristic products with sharp architectural lines. Available in 30" or 36" widths, Toblino features durable stainless steel push button controls which allow for easy adjustment of blower speeds and dual halogen lamps.

Toblino features a telescopic chimney for up to 8'5" ceilings. Designed for standard ducted installation, Toblino can also be installed as a recirculating system using the Recirculating Kit, available as an accessory. Additional accessories for Toblino (CFM reduction kit and chimney extension) can be found on page 6.



halogen lamps



stainless steel push button controls



anodized aluminum mesh filters

# WALL-MOUNT MODERN DESIGNS HIGH PERFORMANCE

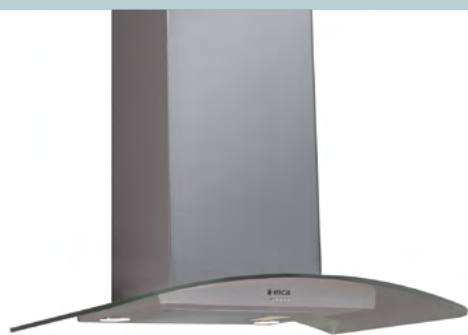
# POTENZA

## Dimensions

30"W x 19 5/8"D x 1 15/16"H  
36"W x 19 5/8"D x 1 15/16"H

## Models

EPT430S1 Potenza 30" Stainless  
EPT436S1 Potenza 36" Stainless



Potenza combines curved glass and stainless steel to create a light and airy environment, which is perfect for any contemporary kitchen. The flowing design is either 30" or 36" widths and comes equipped with an efficient 400 CFM blower that can support the cooking demands of most kitchens. Stainless steel push button controls, manage multiple functions, including halogen lighting and 3-speed blower.

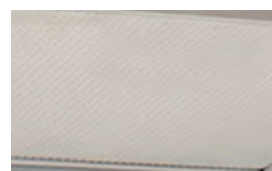
Potenza features a telescopic chimney for up to 8'5" ceilings. Designed for standard ducted installation, Potenza can also be installed as a recirculating system using the recirculating kit, available as an accessory. Additional accessories for Potenza (CFM reduction kit and chimney extension) can be found on page 6.



halogen lamps



stainless steel push button controls



anodized aluminum mesh filter

# VOLTERRA

## Dimensions

30"W x 19 5/8"D x 10 1/4"H  
36"W x 19 5/8"D x 10 1/4"H

## Models

EVL430S1 Volterra 30" Stainless  
EVL436S1 Volterra 36" Stainless



Volterra with its pyramid shaped angles and stainless steel finish make it a visually striking statement to any kitchen. Available in 30" or 36" widths, Volterra features stainless steel push button controls that manage multiple functions, including halogen lighting and the internal 3-speed blower.

Volterra features a telescopic chimney for ducted installation heights of 7'11" to 9'2" ceilings. Designed for standard ducted installation Volterra can also be installed as a recirculating system using the Recirculating Kit, available as an accessory. An additional accessory for Volterra (chimney extension) can be found on page 6.



halogen lamps



stainless steel push button controls



anodized aluminum mesh filters

EXTENSIONS OF USABILITY

INSERT  
OUT OF SIGHT  
POWER

FILTER UPGRADES

EBLGFK30	Allasio 30"
EBLGFK36	Allasio 36"

CFM REDUCTION KIT

EXXCRKR8	Potenza, Toblino
----------	------------------

BACK DRAFT DAMPER

EXXNRVRD	Allasio, Nemi
----------	---------------

DUCT TRANSITION KIT

EXXTRK07	Nemi (7" Round)
----------	-----------------

CHIMNEY EXTENSION

EXXCEK05	Volterra
KIT01609/1	Potenza
KIT01935	Toblino

LINER KIT

EXXHDL30	Asti (for 30" applications)
EXXHDL36	Asti (for 36" applications)

RECIRCULATING KIT

EBLRCK02	Allasio 30"
EBLRCK03	Allasio 36"
ENMRCK36	Nemi
EXXRCK09	Volterra
KIT02721	Potenza, Toblino
KIT02770	Asti, Sora

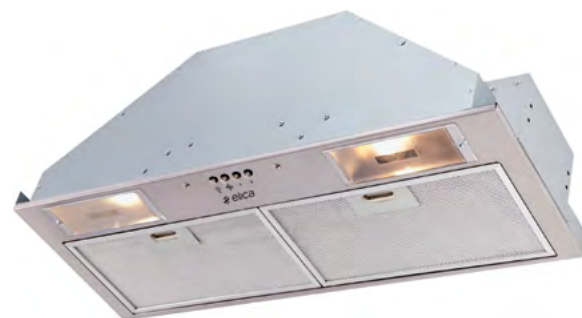
ASTI

Dimensions

28 1/4" W x 10 3/4" D x 9 1/2" H

Models

EAS428SS Asti 28" Stainless



Asti is designed for discreet mounting inside cabinetry. At 28 1/4" wide and only 10 3/4" deep, Asti fits perfectly into 12" deep cabinetry and is ideal for kitchens where space is limited, or where the range hood needs to be out of sight. Asti comes equipped with an efficient 400 CFM blower that can handle most cooking needs.

Convenient stainless steel push button controls operate the 3 speed blower and incandescent lighting, while dishwasher safe anodized aluminum mesh filters offer easy maintenance. Asti is designed for standard ducted or recirculating installation. An accessory for Asti (hood liner kit) can be found on page 6.



incandescent lamps



stainless steel push button controls

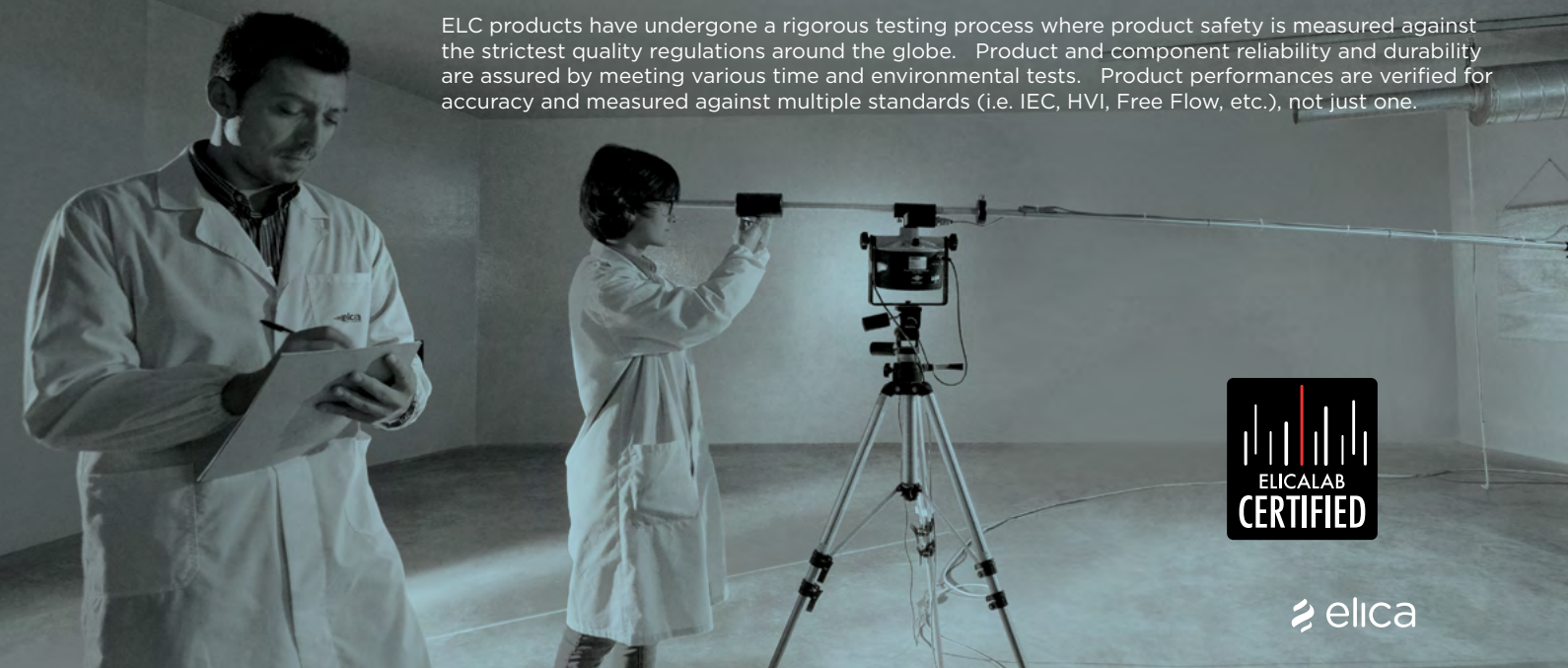


anodized aluminum mesh filters

CERTIFICATIONS  
ELICA LAB

Elica Lab Certified: The mission of ELC is to serve consumers by assuring safety and reliability, plus verifying the achievement of published performance ratings for all products and components developed as part of the range hood.

ELC products have undergone a rigorous testing process where product safety is measured against the strictest quality regulations around the globe. Product and component reliability and durability are assured by meeting various time and environmental tests. Product performances are verified for accuracy and measured against multiple standards (i.e. IEC, HVI, Free Flow, etc.), not just one.



The catalog is owned by Elica SpA. All rights are reserved. Any reproduction is strictly prohibited.

Printing will not always reproduce accurately and may vary from the original materials, colors, and tints.

Elica reserves the right to modify data and details of the products listed in this catalog, even without notice.

**Visual Concept**

Elica Team

**Photographs**

Proyecto VAS

**Rendering**

Jose Vidal

**Photolithographs & Post Production**

Vincent Schwellenbach

**Coordination**

Matt Holmes

Laura Reynoso

