

Guide for the installation of duct-out hoods with original piping.

Filtering or duct-out hood?

Make sure you have a duct-out hood before following the piping guide for the discharge of fumes outside.

Filtering hoods do not require any piping, as they recirculate air through their own filters. Therefore, this guide refers to duct-out hoods only .

elica

DUCT-OUT HOODS PIPING GUIDE

Installing a duct-out hood by Elica means combining aesthetics, efficiency and safety. Selecting the right piping and installing it properly is crucial to ensure your hood top performance. By following these steps and using original piping, you will have your duct-out hood installed properly, thus ensuring optimal performance and stylish design in your kitchen.

Contact our [customer service](#) for assistance in selecting the piping that best suits your needs.

1.

Select original components carefully

- **SUITABLE DIAMETER**

Maintaining a uniform diameter or reducing it gradually is essential to maximise efficiency of the extraction system. To ensure proper extraction, make sure that your piping minimum diameter is of 12.5 cm: too narrow piping can reduce the hood efficiency and increase noise levels. Drastic changes in diameter along the piping run shall also be avoided, as they can result in significant performance and efficiency losses. We recommend to use 15 cm diameter piping, avoiding reductions to 12.5 cm unless it is strictly necessary.

- **PIPING LENGHT**

In order to achieve your hood maximum efficiency and reduce noise, make sure that the total length of your piping does not exceed 6 metres. Furthermore, the ideal number of elbows allowed is two; in this way, efficiency reduction will be minimized and whisper-quiet operation ensured.

2.

Exit hole dimensions

- **MATCHING THE PIPING WITH THE HOLE DIAMETER**

The air outlet hole shall have a 12.5 cm minimum diameter in order to ensure adequate fume removal. In order to reach higher efficiency levels, a diameter of at least 15 cm or more is recommended. An adequately sized air outlet hole is crucial to ensure the hood maximum efficiency, while providing a clean and healthy kitchen environment.

- **THE RIGHT HOLE**

Make the hole as high up the wall as possible to take advantage of the natural flow of fumes upwards.

elica

3. Fittings and non-return valves

- **FITTINGS**

Used to match the dimensions of the air outlet hole with the pipe, to ensure proper connection.

- **NON-RETURN VALVES**

Essential for preventing fumes from being returned into the kitchen, for a cleaner and safer environment.

4. Hide the pipes

- **PLASTERBOARD PARTITION**

An elegant solution for creating visual continuity and concealing any piping.

- **PIPING PAINTING**

Choose paints that blend in with the wall for a more homogeneous look.

- **SHELVES OR CABINETS**

Used to conceal piping while adding storage space.

- **FALSE CEILING**

A refined solution to completely conceal piping and install additional lighting.

Don'ts

- **CHOOSING THE WRONG PIPING**

Avoid inappropriate materials or diameters that may impair product functionality.

- **NOT CONSIDERING THE PIPING ROUTE**

Avoid sharp elbows or excessive angles that can obstruct air flow.

- **PIPING SAFE FIXING**

Make sure that pipes are fitted and secured properly to prevent air leaks in the piping duct.

elica

DUCT-OUT HOODS PIPING GUIDE

Codes and dimensions of original Elica piping

Elica offers a series of original piping for proper and compliant installation.
Details as follows:



Code: 1052G

Sizes:
150×70 - Ø125mm



Code: 1052AD

Sizes:
Ø150-3000mm



Code: 1053M

Sizes:
Ø150-120mm



Code: 1053Q

Sizes:
150×70 - Ø125mm



Code: 1053S

Sizes:
90° 220×90mm



Code: 1053W

Sizes:
Ø150-1000mm



Code: 1053X

Sizes:
Ø150-500mm



Code: 1053Z

Sizes:
Ø150



Code: 1052C

Sizes:
150×70×1000mm



Code: 1052D

Sizes:
105×70



Code: 1052E

Sizes:
90° 150×70mm



Code: 1052F

Sizes:
90° 50×70mm



Code: 1052L

Sizes:
Ø125-500mm



Code: 1052M

Sizes:
220×90×3000mm

DUCT-OUT HOODS PIPING GUIDE



Code: 1052N

Sizes:
Ø125-1000mm



Code: 1052O

Sizes:
Ø125-1000mm



Code: 1052P

Sizes:
Ø125



Code: 1052S

Sizes:
90° 220×90mm



Code: 1052W

Sizes:
Ø125-3000mm



Code: 1052X

Sizes:
Ø150×500mm



Code: 1053B

Sizes:
50×70×150mm



Code: 1053M

Sizes:
Ø150-300mm



Code: 1053N

Sizes:
220×90mm



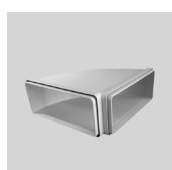
Code: 1053P

Sizes:
220×90 - Ø150 mm



Code: 1053Q

Sizes:
Ø150-1000 mm



Code: 1053R

Sizes:
90° 220×90mm



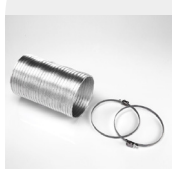
Code: 1053Y

Sizes:
Ø150



Code: KIT0094725

Sizes:
Ø150-750mm



Code: KIT0094727

Sizes:
Ø125-750mm



Code: KIT0161457

Sizes:
Ø150×240mm

DUCT-OUT HOODS PIPING GUIDE

Thank you for consulting our duct-out hoods piping guide.

By following these steps and using original Elica piping, you will be able to install your duct-out hood efficiently, thus ensuring optimal performance and stylish design in your kitchen.

You can find the right component for your needs in our shop:

Ø 125 DUCT-OUT HOODS

Ø 150 DUCT-OUT HOODS

All the aforementioned details refer to wall-mounted, built-in and island/suspended hoods (excluding Ceiling hoods).

Please contact our [technical service](#) or any doubts or questions.

Thank you for choosing us.

elica