

Explore the versatility of our NikolaTesla hob installation systems.

Piping solutions for NikolaTesla extractor hob models UNPLUGGED, SWITCH GLOW, SWITCH ONE HP, ONE, LIBRA, PRIME S and FLAME.

We offer piping solutions suitable for both duct-out and filtering versions of NikolaTesla models UNPLUGGED, SWITCH GLOW, SWITCH ONE HP, ONE, LIBRA, PRIME S and FLAME.

These systems are designed to meet all your ventilation needs, allowing for easy installation and effective operation right from the start. In addition, we offer additional accessories, elbows and piping to suit all of your space needs.

elica

PIPING GUIDE

NIKOLATESLA UNPLUGGED, SWITCH GLOW, SWITCH ONE HP, ONE, LIBRA, PRIME S, FLAME

Duct-out version piping

Installing NikolaTesla duct-out hobs is extremely simple. You will find all the necessary basic components in the product packaging.

Please contact our [customer service](#) for any doubts or questions.



Rear air outlet fitting

Code: RAC0136806A

This component is essential to connect the system to the rear exit point, as it allows direct discharge of fumes to the outside.



90° Rectangular elbow

Code: KIT0121005

Perfect in case of tight angles, this elbow is essential for directing pipes without compromising on airflow efficiency.



15° Fitting (4 pieces)

Code: KIT0121002

These fittings offer extra flexibility, allowing pipes to be oriented in different directions in case of obstacles or adapted to particular kitchen layouts.



Rectangular tube

Code: TUB0153770A

This pipe is the main channel through which fumes are conveyed outside, thus providing an odour and vapour-free kitchen environment.

System configuration:

The duct-out version installation system is designed for maximum flexibility and adaptability.

Please note that the piping supplied with NikolaTesla PRIME S model may be different from the standard piping shown in the pictures. Please refer to the installation manual for detailed and specific instructions.

elica

PIPING GUIDE

NIKOLATESLA UNPLUGGED, SWITCH GLOW, SWITCH ONE HP, ONE, LIBRA, PRIME S, FLAME

Filtering version piping

The filterig version is perfect for those looking for an 'internal' solution without having to discharge fumes outside. All the necessary components for a clean and efficient installation are supplied with the product.

Contact our [customer service](#) for assistance in selecting the piping that best suits your needs.



Ceramic filters

Code: KIT0120952A

These high-quality filters ensure optimal air filtration as they capture odours and particles, thus ensuring clean and fresh air in your kitchen.



90° Rectangular elbows

Code: RAC0120994A

These elbows are designed to ensure smooth passage of air throughout the system, avoiding efficiency reduction and noise increase.



Rectangular tubes of various sizes

Code: RAC0153758A

Rectangular pipes available in various sizes offer maximum flexibility, allowing you to adapt the filtration system to your space and optimize air flow.



External outlet fitting to the plinth

Code: KIT0121002

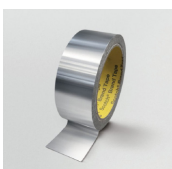
Complemented by an elegant chrome-plated profile, this fitting adds a refined design detail to your kitchen, while making filtered air discharge easier.



Extension fittings and supports for outlet fitting

Code: RAC0131584A

These components allow the system to be adapted to various furniture layouts, ensuring stable installation and clean finish.



Adhesive tape

Code: KIT0161453

Used to seal all connections to prevent air leaks. It is an essential component, as it ensures the appliance proper operation in terms of both extraction power and noise levels.

elica

PIPING GUIDE

NIKOLATESLA UNPLUGGED, SWITCH GLOW, SWITCH ONE HP, ONE, LIBRA, PRIME S, FLAME

Deep cabinet filtering kit

This kit is specially designed for kitchens with deep cabinetry, allowing the use of every single inch of space conveniently. This kit will transform your kitchen into a clean and well-organised environment, by improving comfort and aesthetics without reducing free space.

Why choose this kit:

- **Maximises space**

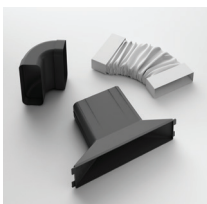
Ideal for making the most of deep kitchen cabinets, it optimises the use of interior space without compromising on functionality.

- **Installation flexibility**

Equipped with both an extension and flexible fitting, it allows to easily adapt the ventilation system to your furniture, thus ensuring precise and personalised installation.

- **Optimal performance**

The supplied 90° rectangular elbow ensures efficient airflow while ensuring very high performance of the ventilation system.



What's in the packaging:

- Extension fitting for cabinet > 70 cm
- 90° rectangular elbow
- Flexible fitting

Installation:

Follow our detailed instructions for easy and proper installation. The accessories provided allow you to adapt the system to the specific size of your kitchen cabinet.

Contact our [customer service](#) for assistance in selecting the piping that best suits your needs.

elica

Thank you for consulting our piping guide for NikolaTesla UNPLUGGED, SWITCH GLOW, SWITCH ONE HP, ONE, LIBRA, PRIME S and FLAME models.

Now you have all the necessary information on available parts and their codes to choose the best piping for your system.

You can find the component that best meets your needs in our eShop, according to your hob version:

NIKOLATESLA DUCT-OUT HOB

NIKOLATESLA FILTERING HOB

Make sure to choose the right components to optimise your NikolaTesla hob efficiency and lifespan.

Please contact our [technical service](#) for any doubts or questions.

Thank you for choosing us.

elica