



WALL-MOUNT

ASPIRE SERIES

Dimensions

30"W x 19 11/16"D x 10 1/4"H
36"W x 19 11/16"D x 10 1/4"H

Models

EVR630S1 Varna 30" Stainless
EVR636S1 Varna 36" Stainless

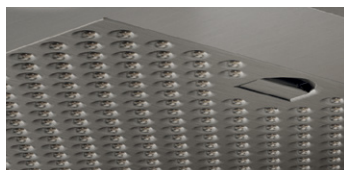
Special features



halogen lamps



multi-function electronic controls with LCD display



stainless steel micro hole filters



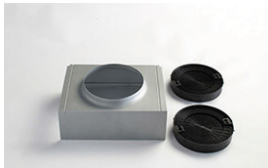
The clean lines, beautifully sloping angles and stainless steel finish of Varna make a striking visual statement. Available in 30" or 36" width, Varna features include a powerful 600 CFM blower, halogen lighting with 2 light intensities, dishwasher-safe stainless steel microhole filters and multi-function electronic controls with LCD display that deliver convenience and safety.

Designed for standard ducted installation (for heights 7'11" to 9'2"), Varna can also be installed as a recirculating system (for heights 7'11" to 9'6") using the Recirculating Kit, available as an accessory.

FEATURES

| | |
|-------------------------------------|--|
| Size (in) & Type Finish | 30" or 36" Wide Wall-Mount Chimney Stainless Steel |
| Controls | Multi-function electronic with LCD display |
| Illumination | 2, 40 Watt Halogen Lamps, 2 Light Intensities (bulbs included) |
| Installation Type | Ducted or Recirculating Installation Recirculating Kit Sold Separately |
| Blower Type | 600 CFM, 4-Speed Internal |
| Blower Performance | Speed 1, 160 CFM, 1.7 Sones Speed 2, 280 CFM, 3.3 Sones Speed 3, 475 CFM, 6.0 Sones Speed 4, 600 CFM, 8.2 Sones |
| Filter Type | Dishwasher-Safe, Professional Stainless Steel Baffle (2 w/ 30", 3 w/ 36") |
| Telescopic Chimney Extension | For heights 7'11" - 9'3" (ducted) For heights 7'11" - 9'6" (recirculating) |
| Duct Transition | 6" Round with Back Draft Damper (top) |
| Electrical | 120V-60Hz 550 Watts at 4.6 Amps (600 CFM), 800 Watts at 6.7 Amps (1200 CFM) |
| Warranty | 2 Year Parts & Labor, In-Home Service |

ACCESSORIES



Optional Recirculating Kit for 30" and 36"

CODE: KIT02766
MODEL: EXXRCK09



Optional Long Chimney Extension Kit

Reaches 8'11" - 11'4" (ducted)
Reaches 9'3" - 11'8" (recirculating)

CODE: KIT02762
MODEL: EXXCEK05

CONSUMABLE PARTS

Replacement Grease Filter (1)

CODE: GFO4YB

Replacement Carbon Filter (1)

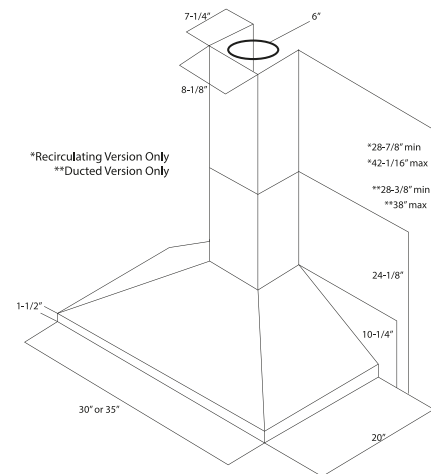
CODE: KIT02667

Replacement Light Bulb (1)

CODE: 2006BH

Consumable parts are sold in units of one (1). Order accordingly.

LINE DRAWING



SPECIAL FEATURES



Elica CRS:

CFM Reduction System (CRS), is an exclusive feature to Elica hoods, which enables the installer to reduce the maximum blower CFM, to meet local code requirements.



Elica Heat Guard:

A safety feature that protects the hood and cabinetry from excessive heat, by sensing extreme temperatures (>158 degrees) and will automatically adjust the blower speed to HIGH. Blower speed will automatically adjust back once temperatures drop to a safe level.